

# FUNDRAISER & ART AUCTION

FRIENDS OF THE GALLERY AND  
EASTERN RIVERINA ARTS

ART AUCTION TO RAISE FUNDS FOR FRIENDS OF THE WAGGA WAGGA ART GALLERY AND EASTERN RIVERINA ARTS, TO CONTINUE FOSTERING AND PROMOTING LOCAL ART AND ARTISTS WITHIN THE REGION.

VIEWING AT THE CURIOUS RABBIT 9 – 25 MARCH

TO BE SOLD AT AUCTION, FUNDRAISING DINNER – 26 MARCH 2023,  
WAGGA WAGGA ART GALLERY

TICKETS ONLINE: [WAGGAARTGALLERY.COM.AU/WHATS-ON](https://waggaartgallery.com.au/whats-on)

## ELAINE CAMLIN



DISCOVERING UNKNOWN OBJECTS  
FRAMED  
ARTIST COLLECTION

The *Micro Worlds* series explores the nuances and intricacies of microscopic forms, often removed from their original context. The imagery moves away from natural or identifiable forms, using printmaking to document and create a suite of new objects that map the discovery of an unknown world.

## ELAINE CAMLIN



FROM THE BEGINNING 10  
FRAMED  
ARTIST COLLECTION

*From the Beginning* presents a new series of intuitive works developed from the knowledge, memory and understanding of organic structures and learned mark-making. The collagraph printing plates use materials from built and manufactured items to organic objects. Each work explores new approaches and relationships with colour application and printing techniques to emphasise layers of texture, tone, and line.

## GREGORY CAROSI



DR6  
OIL ON FOUR ALUMINIUM PANELS  
80 X 160 CM, 2020.  
ARTISTS COLLECTION

This painting formed an iconic part of the solo exhibition, *Dead Reckoning*, at Wagga Wagga Art Gallery in 2020. It, like the other works in the DR suite, explores the ways in which humans and animals move through their environment in response to its physical and visual topography. Inspired by the monumental geological landmarks of the northern Flinders Ranges, this painting sets the human desire for wayfinding - through pathways, lines of sight, the desire for higher vantage points - in counterpoint to the implacability of geological time - summed up by the radiant central hill at dusk.

## CRAIG COUZENS



GARDEN OF EDEN  
FRAMED  
ARTIST COLLECTION

Craig does not see himself as 'religious'; however, he is in constant amazement at the way our small speck of dust within the Cosmos stumbles, falls, and then raises itself!

Despite his late start to art and printmaking, his varied artwork comes from the various experiences he has had in life. His curiosity remains unbound - sometimes he feels to his detriment, but he is not deterred.

Garden of Eden - Red is commonly used to acknowledge danger. In this print, liberties are taken with my interpretation of Eve breaking through the garden's black walls. The forbidden fruit, hidden on the tree is taken. To those holding the faith, tragic consequences resulted and the green grass and plain remain forever out of reach.

## CRAIG COUZENS



FROM DISASTER WE GROW  
LIMITED EDITION PRINT,  
FRAMED  
ARTIST COLLECTION

## KATHERINE ELIZABETH LOONEY



GREETINGS  
ACRYLIC ON CANVAS  
105CM X 80CM  
FRAMED  
ARTISTS COLLECTION

Born and based in Wagga Wagga, Katherine Elizabeth Looney works with acrylic paint mediums on small and large scale canvas. Katherine's paintings are an abstracted representation of thoughts conjured from the past and present. In the making of her paintings, she expresses something that is internal & emotive as opposed to an observed landscape or entity. Using colour to magnify her intentions, Katherine explores mark making, directional lines and irregular blocks of colour whilst seeking out a successful composition. She is deliberate in creating works that render positive experiences, knowing her works will continue to do so long after her time in creating them.

## JAMES FARLEY



RAMBUNCTIOUS GARDEN (NO. 1), 2016/17.

1500 MM X 705MM

ARTISTS COLLECTION

A framed unique lumen print on silver gelatin paper that has been exhibited at WWAG (2017) and Broken Hill Regional Art Gallery (2017). The work is part of my broader research into cameraless photography and ecological thinking. The series of three were created from the green waste on-site at Little Triffids Flower Farm. This is No.1 in a series of three works. No.2 is owned by Dr Sue Wood and No.3 is in the WWAG collection.

## CYNDI FREIMAN



THREE SMALL PRINTS

FRAMED

CRAIG COUZENS COLLECTION

PURCHASED TAFE ART AUCTION 2015

Produced whilst studying for her MA Fine Arts at UNSW in 2011, Cyndi explored the 'Death of Handwriting'. These three etchings are based on different scripts, examining the different forms of writing historically and culturally.

## JUANITA MCLAUCHLAN



GII

UNFRAMED PRINT

ARTISTS COLLECTION

Juanita McLauchlan is a Gamilaraay woman living on Wiradjuri country in Wagga Wagga. Juanita enjoys the thrill, complexity, texture, chaos and control of the printmaking medium. While her material and conceptual problem-solving processes of making are experimental, Juanita's work is equally indebted to, and guided by her Indigenous heritage.

## JUANITA MCLAUHLAN



MIRU  
FRAMED  
ARTISTS COLLECTION

Juanita's works are inspired by the journey of finding culture and family history through our environment and the connections to the land.

## KAREN WALSH



SEATED NUDE  
SANGUINE AND CHARCOAL PENCIL  
FRAMED  
ARTISTS COLLECTION

Karen's creative artworks includes mediums such as pastels, oils, acrylics, inks, and watercolours. Drawing the human form and exploring the endless possibilities of this beautiful subject is a constant experience and one of the greatest ways Karen feels she can be in touch with her inner artist. Karen's achievements include awards and prizes in local/regional exhibitions and has works in public, corporate, and private collections in Australia, Canada, China and England

## SUE WOOD



CANOLA AND CURSE  
FRAMED  
ARTIST'S COLLECTION

Sue Wood is a former senior lecturer in the School of Communications and Creative Industries at Charles Sturt University. She is a practicing visual artist and is fascinated by the ways that humans interact with the environment: looking at it, immersing ourselves in it, or trying to impose order on it.

## SUE WOOD



PRINT ON PAPER

Sue is interested in how making art in relation to place might help us understand one another, bringing us closer to the natural world, and encouraging us to live more sustainably.

## CHRISTINA REID



IN THE TALL GRASS 2020

With a background in Graphic Design and a love of old school, hands-on processes, Christina is a multi-disciplinary graphic artist who specialises in the areas of printmaking, drawing and illustration.

Having many years of experience as a teacher, she often runs classes and associated workshops for all ages and levels of experience.

## KATIE ALLEVA



TREE OF TENERE 2010  
PRINT

Katie Alleva majored in printmaking at Charles Sturt University in Wagga Wagga.

## JULIA ROCHE



OIL ON PAPER

Julia Roche explores her immediate surroundings situated in the ever-changing landscape, bearing witness to the emotive and sublime qualities of the environment. She grew-up and currently lives on Wiradjuri country at the property 'Wooroola' near Mangoplah in regional New South Wales. As land custodians Roche and her family are learning about, and respect the changing cycles of the ecosystem and the disquieting power of nature.

## TRACEY JONES



RE-IMAGINED LANDSCAPE  
OIL ON LINEN

Tracey Jones is an artist who employs traditional oil painting techniques to create figurative, landscape and still life works that reflect a contemporary perspective. Exploring the moment of affect as experienced through the lens of memory, her work contains the duality of narrative and aesthetic generated through her choice of subject matter and composition.

## JOEL MARKHAM



LE CIRQUE  
2021  
ARCHIVAL PIGMENT PHOTOGRAPHIC PRINT

Joel is a practicing and exhibiting photographer based in Wagga Wagga NSW, where he uses the content and contexts of daily life to ruminate on 'big picture' issues like the human condition, the nature of our journey, and the terrain through which it passes. Joel's practice is driven by a fundamental need for creative exploration and expression.

## MARIS HERR



FLOWER LAMP

Maris is a local designer and maker based in regional NSW creating laser cutting in combination with traditional skills.

## KATH POWDERLY



LARGE POTTERY BOWL WITH COCKATOO

Kathryn Powderly is a ceramicist living and working in Wagga Wagga. Her distinctive style of work depicts Australian birds including Magpies, Cockatoos and Galahs. Kathryn uses both hand-building and wheel based techniques to create unique vessels and decorative forms. Wagga Wagga offers a range of ceramic workshops.

## ANGELA HALKIAS-CHAMP



POTTERY VESSEL  
BANKSIA MARGINATA-CYLINDER FORM  
2022

The piece is a continuation and representation of my obsession with Banksia species - where as a younger adult in the early 2000's I embarked on some study in plant species and became fascinated by the multitude of flower and leaf shapes of Banksias that are in the Proteaceae family. Now with my work in the ceramic medium, I am able to translate the energy that I derive from Banksias and their fascinating forms into ceramic objects that on the surface parallel with plant forms in nature.



## VIC O'CONNOR



LINO PRINTS  
THE INTERRUPTED WEDDING FEAST  
THE CONCIERGE  
CONMAN BEGGING

Victor George O'Connor (21 December 1918 – 8 September 2010) was an Australian artist and an exponent of the principles of social realist art. From the time of the Great Depression in the 1930s his work embodied social and political comment on the conditions of working-class people and the structures of society that caused their suffering.

## CHRIS WHYTE



CERAMIC PLATTER

Chris Whyte has always been an artist at heart, even if it did take a back seat for years while he was a chef. Now he's back at it.

## ANNABEL NOWLAN



(CUBAN) MUTUAL GROOMING  
OIL ON BOARDS  
2016

The intrinsic and identifiable characteristic of Annabel Nowlan's art practice stems from a long connection to land; the land of her family farm and of the Wiradjuri people, at Bimbi in south western NSW

## ARTIST UNKNOWN



GLASS SPIRAL  
EUROPEAN ORIGIN  
DONATION FROM THE SCHNORBUS COLLECTION  
DONATED FROM PRIVATE COLLECTION

## STUART WALLACE



LOVE A SUNBURNT COUNTRY 1999  
MIXED MEDIA

## JENNY ASHBY



JOURNEY AND PLACE 2000  
ARTIST PROOF, ETCHING, COLLAGRAPH, PHOTO-RELEASE AND AQUATINT ON PAPER  
FROM A PRIVATE COLLECTION

Jenny Ashby was born in Gundagai, NSW Australia and began her arts career from an early age before taking on formal studies. After completing a TAFE certificate in Studio Ceramics Jenny went on to study Fine Arts at Charles Sturt University in Wagga. After completing her Bachelor of Fine Arts in 2003 she was employed as a Fine Arts Lecturer at Wagga TAFE and Charles Sturt University. Jenny now lives and works between Australia and Indonesia

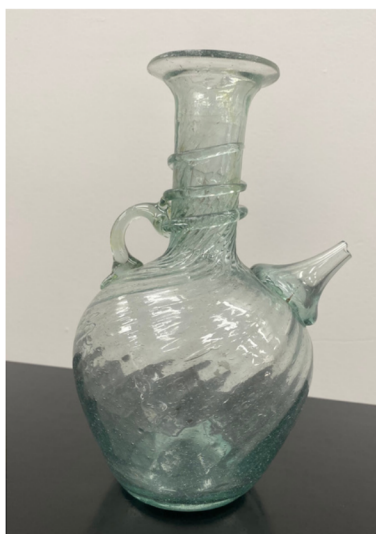
## KAREN FINEMORE



URNS AROUND THE SUN  
TRIPTYCH  
MEDIUM: INK ON 200GSM A5 DRAWING PAPER

These ink drawings are inspired from a recent Mandala drawing class Karen attended, funded by the Friends of the Gallery, Wagga Wagga. Some say mandalas represent our soul and life cycles, our individual journeys enduring the twists and turn around the sun.

Mandala's come in many forms, these are examples of a Wagga artist's contemporary exploration. Karen is a local artist whose main focus has always been drawing but she enjoys a range of creative mediums including painting, printmaking, and sculpture.



RECYCLED GLASS FROM WINDOWLESS WORLDS  
DONATED BY SAM BOWKER  
TRADITIONAL GLASS VESSEL CREATED FROM THE BROKEN WINDOWS OF BEIRUT,  
LEBANON, AFTER 4 AUGUST 2020

## STEPHANIE PHILLIPS



CERAMIC VASE  
18CM X 16CM  
2017  
DONATED FROM A PRIVATE COLLECTION

Stephanie Phillips is a ceramic artist from Sydney, Australia. She draws strong influence in her artistic direction from both of her grandmothers. Her paternal grandmother was a Russian immigrant who was a talented artist and craftswoman, while her maternal grandmother was involved in the establishment of The Crommelin Native Arboretum at Pearl Beach, NSW, where Stephanie has spent many weekends and holidays since childhood

## LINZIE NARDI



THE SANCTUARY 3  
ACRYLIC ON CANVAS  
120 X 90CM

Linzie Nardi lives and works in Leeton. Her work is inspired by daily life and the world around her; observing light, colour, shape, form, and texture in the natural environment. She enjoys the rush of painting a work in a limited time, working quickly and intuitively as well as the tactile feel of wet-on-wet paint. The process means each work captures her energy and emotion in the moment of creation.

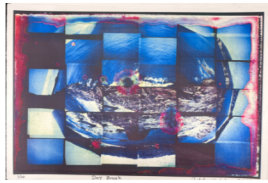
## ANNE MCMASTER



DRIFTWOOD, APSLEY STRAIT, BATHURST ISLAND, 2001  
SCREENPRINT

Anne McMaster is a contemporary artist based in Darwin, Australia. Her explorations with printmaking and watercolour mediums have led her to investigate the coastal aesthetics of mangroves, coral, tide lines and sea faring objects. Her work is found in the collections of various Australian art institutions.

## POETRY IN PRINT COLLECTION



POEM BY  
LACHLAN BROWN

ARTHUR WICKS

CRAIG COUZENS

CHRISTINA REID

JUANITA MCLAUGHLAN

Poetry in Print was a project supported by The Friends of the Wagga Wagga Art Gallery. Acclaimed poet Lachlan Brown was commissioned to write a poem on the theme of the environment. Four local print artists were invited to respond to the poem. The result was a diverse collection of works. These works will be auctioned as one item housed in a hand-made solander box.



*Fundraiser & Art Auction*

# DINING WITH ART

INSIDE THE ARCHIBALD PRIZE

*Guest Speaker*

**2022 ARCHIBALD PRIZE  
WINNER BLAK DOUGLAS**

Dine alongside the famous portraits from the 2022 Archibald Prize exhibition, hear from 2022 Archibald Prize winner Blak Douglas, and bid on and secure original artworks from a range of well-known and emerging artists.

The 2 course catered dinner will also include drinks and entertainment across the evening. Exclusive event with limited tickets available.

**When:** Sunday 26 March, 6pm

**Cost:** \$110 General Admission; \$100

Friends of Gallery [FOG] Member

**Ticket** includes 2-course meal, drinks, entertainment and auction ticket.

**Who:** Ages 18+

**Where:** Wagga Wagga Art Gallery

**BOOK TICKETS:** [WAGGAARTGALLERY.COM.AU/WHATS-ON](https://www.waggaartgallery.com.au/whats-on)